



COLLECTION 2018



CF0231

33,50x33,50x5 mm
5,50 gr circa
3x6
135x275x24

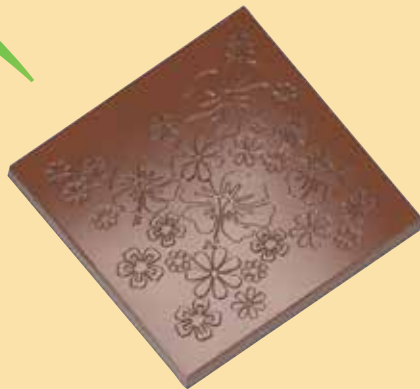
Realizzato in collaborazione
con Silvia Federica Boldetti



CF0228

24,50x21,50x19 mm
11,50 gr circa
3x8
135x275x24

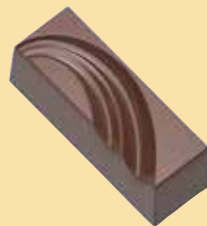
Realizzato in collaborazione
con Silvia Federica Boldetti



CF0225

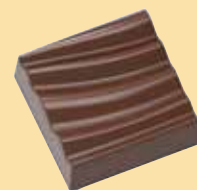
99,50x99,50x9 mm
93,50 gr circa
1x2
135x275x24

Realizzato in collaborazione
con Silvia Federica Boldetti



CF0223

42,50x15,50x14 mm
10,50 gr circa
3x8
175x275x24



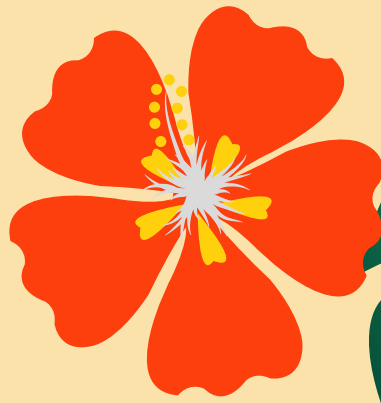
CF0230

28,50x28,50x10,50 mm
9 gr circa
3x7
135x275x24



CF0504

34x18,50x21 mm
8,50 gr circa
3x8
135x275x26



CF0221

34x18,50x25 mm
7 gr circa
3x8
135x275x30



CF0222

34,x18,50x23,50 mm
7 gr circa
3x8
135x275x30



CF0227

35x31x10 mm
9,50 gr circa
3x7
135x275x24



CF0226

29x29x21 mm
7,50 gr circa
3x7
135x275x30



CF0229

36x19x17 mm
11,50 gr circa
3x7
135x275x24



CF0224

117,50x30,50x10,50 mm
41 gr circa
1x7
135x275x24





*Chocolat
Form*

stampi & attrezzatura per cioccolato

Chocolat Form Srl
Via Chiesa 27B • 36034 MALO VI
Phone: 0445 431760

info@chocolatform.com
www.chocolatform.com